



MMAC Theatre Specs and Equipment

Updated February 2020

HOUSE

Maximum capacity of 191 people. 155 bleacher-style seats. 3 additional un-raked rows of 12 chairs each.

STAGE DIMENSIONS

- The practical useable stage space is 31'W x 24'D.
- Total Depth: 25'D to the Cyc || 26'D to the Blackout || 30' D to the Back Wall
- SR Wing is 10'W x 30'D under and overhang. Clearance height is 7'
- SL Wing is 3'W x 30'D.
- Back wall is covered with mirrors (not removable). Covered when used with Blackout
- Seamless Black Dance Marley over plywood on a tongue and groove sub-floor.

DRESSING ROOMS/ AMENITIES

- Main dressing room with counter for 8 performers, mirrors and makeup lights
 - Direct access to the SR wing
 - Full bathroom and shower
 - Kitchen sink with filtration system
 - Mini fridge
 - Storage cabinets
 - Air conditioner
 - Chairs
- Additional dressing room with counter for 8 performers, mirrors and makeup lights
 - Air conditioner
 - Chairs

RIGGING

- Parallel fixed pipe grid suspended on 21" centers from perpendicular Unistrut channels
- Trim is 21' from stage to pipe center
- Two motor-operated battens for CYC and SCRIM || Trim is 19'

SOFT GOODS

- CYC: 18'6"H by 35'W Seamless IFR White Muslin
- SCRIM: 19'H by 38'W IFR Black Scrim
- BLACKOUT: 20'H by 40'W IFR Black Velour on pull-along track

LIGHTING

- ETC Sensor+ 96-dimmer install rack with D20E Cards
- 92 dimmers in use by rep plot || 2 Circuits dedicated to Hot Power || 2 spare
- Control via an ION 1000 Console with 2x10 Fader Wing and 2 ELO 19" Touch Screens



MMAC Theatre Specs and Equipment

Updated February 2020

- ETC Unison 12-dimmer install rack with D20E and R20 modules for work lights
- Extensive Plot Featuring Source4 Ellipsoidals and WFL Pars
- 8 @ Source4 Lustr+ with CYC Adapters
- 3 @ Source4 Lustr+ with 26° Lenses, I-Cue and DMX Iris
- Grid access via 25' Battery-powered Genie Lift

REP LIGHTING PLOT

- The theatre is a multi-use facility that uses an extensive dance rep plot
- No alterations to the rep plot except as noted below (at Additional Cost)

BASIC SOUND SYSTEM

- 2x **EAW MK2396** MAINS
- 2x **EAW MK2396** FRONT FILLS
- 2x **YAMAHA C115VA** STAGE SIDE FILL MONITORS
- Basic Stereo Mixing through Rolls RM67 Studio Mixer (1 Stereo Mix to All Speakers)
- Aux-in via 1/8" TRS Stereo Headphone Jack
- **Denon** DN-C635 CD Player
- **Mac Mini** Computer with **QLab 3 Pro** License

COMMUNICATION

- 1x Telex TR-240 2.4GHz Multi-Channel Wireless Base Station Access Point
- 4x Telex TR-240 2.4GHz Wireless Intercom Beltpack
- 4x Headsets

OTHER EQUIPMENT

- 3x boom mic stands
- 2x standard mic stands
- 2x tabletop mic stands
- 1x Genie Lift
- Edison Power Strips
- Chairs
- Tables (with or without tablecloths)
- Music Stands
- Upright piano available



MMAC Theatre Specs and Equipment

Updated February 2020

Note about Optional Production Equipment:

We strive to provide all our customers with the best possible rental experience for a reasonable price. To keep the costs low, we are offering the following optional equipment and services ala-carte, at additional cost.

OPTIONAL LIGHTING SYSTEM/ EFFECTS (at Additional Cost)

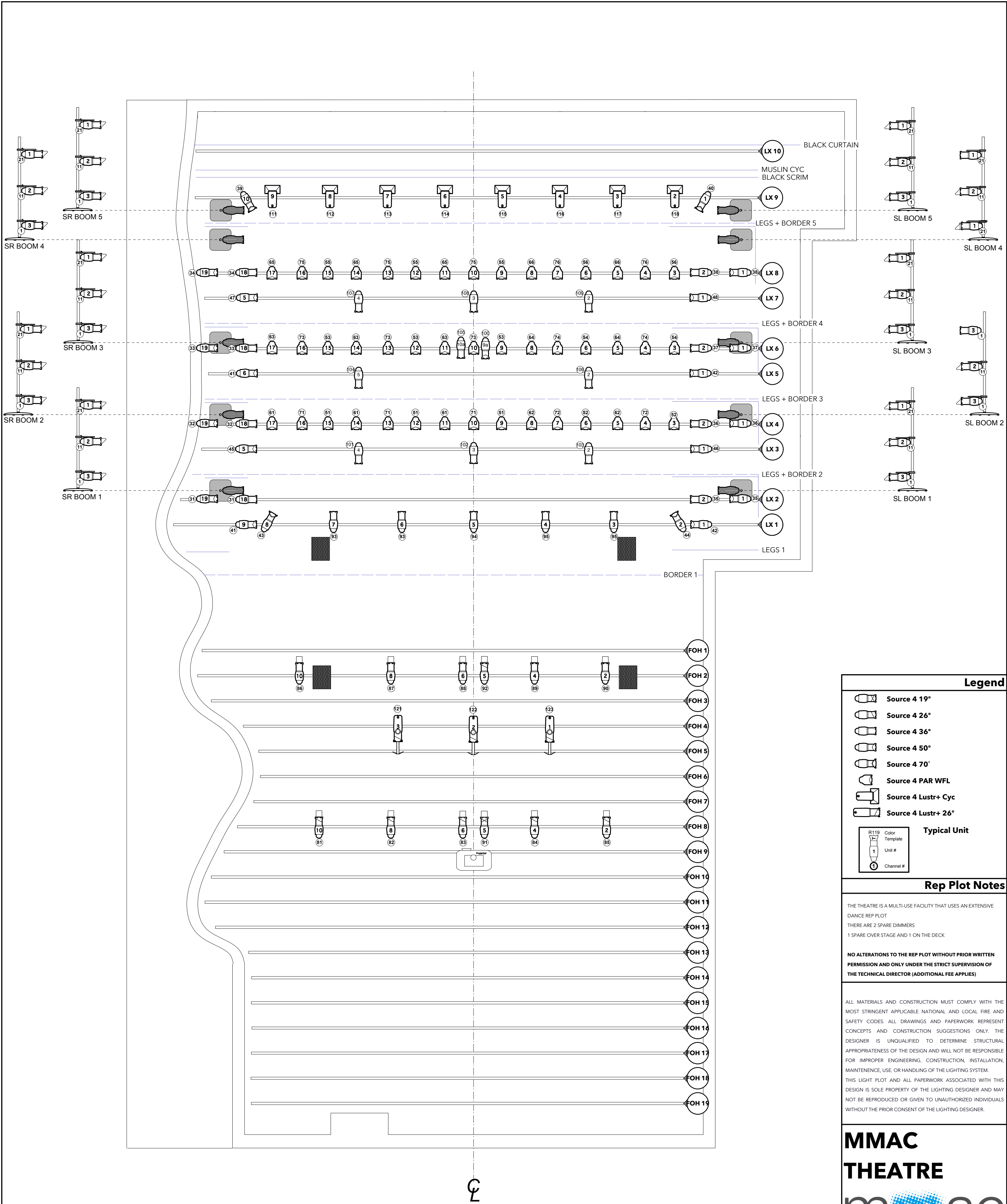
- Alterations to the rep plot deemed reasonable by the MMAC Production Staff. Must be discussed before contract signing
- **Unique 2 Hazer (with Fluid) + Antari AF-3 DMX Fan**

OPTIONAL SOUND SYTEM (at Additional Cost)

- **All Basic Sound System Equipment as Above**
- 2x **BAG END S18E-C SUBWOOFER**
- **Yamaha 01V** Digital Mixing Console
- **MOTU MK3** Audio Interface
- 4x **SENNHEISER SKM 100-835** Wireless Handheld Mic

OPTIONAL VIDEO (at Additional Cost)

- **Christie HD12-H 11,000 Lumen Projector**



Legend

- Source 4 19°
- Source 4 26°
- Source 4 36°
- Source 4 50°
- Source 4 70°
- Source 4 PAR WFL
- Source 4 Lustr+ Cyc
- Source 4 Lustr+ 26°

Typical Unit

R119	Color
VF	Template
1	Unit #
1	Channel #

Rep Plot Notes

THE THEATRE IS A MULTI-USE FACILITY THAT USES AN EXTENSIVE DANCE REP PLOT
 THERE ARE 2 SPARE DIMMERS
 1 SPARE OVER STAGE AND 1 ON THE DECK

NO ALTERATIONS TO THE REP PLOT WITHOUT PRIOR WRITTEN PERMISSION AND ONLY UNDER THE STRICT SUPERVISION OF THE TECHNICAL DIRECTOR (ADDITIONAL FEE APPLIES)

ALL MATERIALS AND CONSTRUCTION MUST COMPLY WITH THE MOST STRINGENT APPLICABLE NATIONAL AND LOCAL FIRE AND SAFETY CODES. ALL DRAWINGS AND PAPERWORK REPRESENT CONCEPTS AND CONSTRUCTION SUGGESTIONS ONLY. THE DESIGNER IS UNQUALIFIED TO DETERMINE STRUCTURAL APPROPRIATENESS OF THE DESIGN AND WILL NOT BE RESPONSIBLE FOR IMPROPER ENGINEERING, CONSTRUCTION, INSTALLATION, MAINTENANCE, USE, OR HANDLING OF THE LIGHTING SYSTEM. THIS LIGHT PLOT AND ALL PAPERWORK ASSOCIATED WITH THIS DESIGN IS SOLE PROPERTY OF THE LIGHTING DESIGNER AND MAY NOT BE REPRODUCED OR GIVEN TO UNAUTHORIZED INDIVIDUALS WITHOUT THE PRIOR CONSENT OF THE LIGHTING DESIGNER.



2019 REP PLOT
 Drawn by: SRC
 Date: July 29, 2019
 Scale: 1/4" = 1'0"
 (on 18" x 24")

MMAC THEATRE MAGIC SHEET

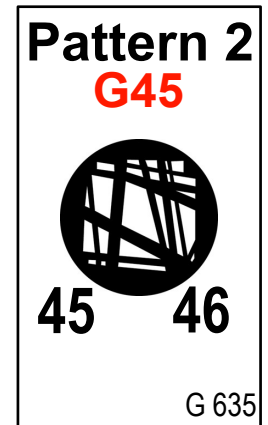
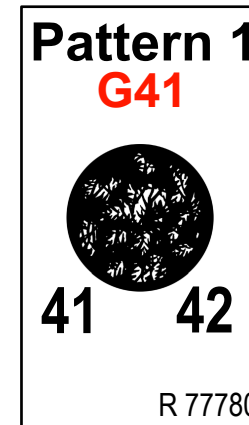
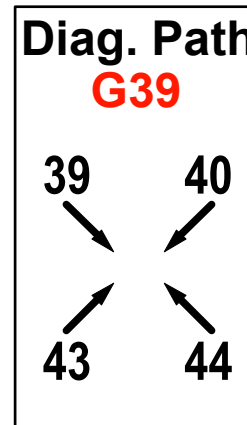
Updated: July 29, 2019

SHINS	
5 G10	10
4	9
3	8
2	7
1 G1	6 G2

MIDS	
15 G20	20 (L161)
14	19
13	18
12	17
11 G11	16 G12

HEADS	
25 G30	30 (R03)
24	29
23	28
22	27
21 G21	26 G22

H/S	
G40	
34	38
33	37
32	36
31 G31	35 G32



CLR B/X
G51

57	58	59
54	55	56
51	52	53

BLUE B/X (L119)
G61

67	68	69
64	65	66
61	62	63

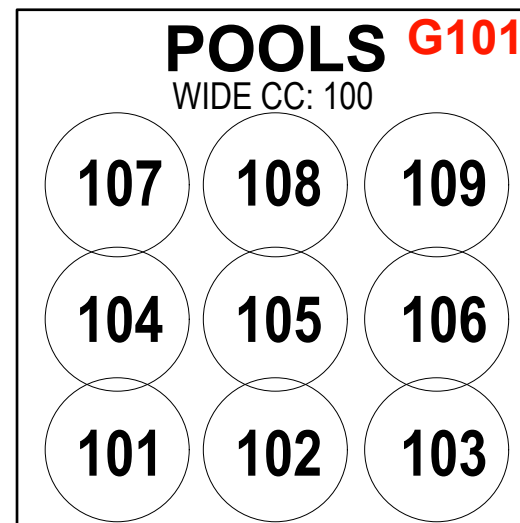
RED B/X (R26)
G71

77	78	79
74	75	76
71	72	73

FRONTS **G90**
(R53)

93 G93	93	94	95	95
86 G82	87	88	89	90
81 G81	82	83	84	85

CC Special: 92
DSC Special: 91



S4 Lustr CYCS **G111**

111 | 112 | 113 | 114 | 115 | 116 | 117 | 118

S4 Lustr I-Cue **G121**

121 122 123



HOUSE LX: 150 | WORKS 151, 152